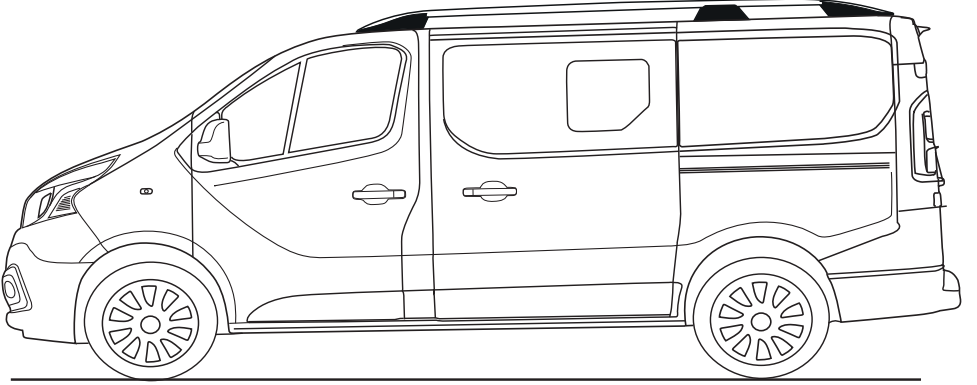




ONTEC
AUTO ACCESSORIES.CO



Renault Trafic (SWB) 2015 Opel Vivaro (SWB) 2015 Nissan Primstar (SWB) 2015

TR	Montaj Talimatı :	PORT BAGAJ
GB	Fitting Instructions :	ROOF RACK
D	Montageanleitung :	DACHRELING
F	Instructions de Montage :	RIDELLES DE TOIT

TR

*Port bagaj taşıma kapasitesi 75 kg. olup; yükleme yapmadan önce aracın tavan taşıma kapasitesinin dikkate alınması gerekir.

G

*Maximale Traglast unsere Dachrelinge betragen 75kg. Die freigegebenen Dachlasten der Fahrzeughersteller dürfen nicht überschritten werden. Bitte zur Kenntnisnahme!

GB

*Roof Rack carrying capacity is maximum 75 kg. Please check your vehicle roof maximum carrying capacity from your car manufacturer before load roof rack.

F

*La capacité de chargement maximale est de 75 Kg. Nous vous prions de vérifier la capacité de chargement du toit de votre véhicule avant de charger les barres de toit.



30 Min.

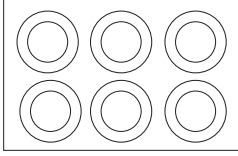
①



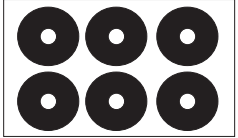
08.05.2017

PARÇA LİSTESİ

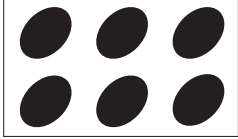
Part List / Teileliste / Lista de accesorios



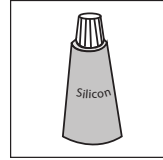
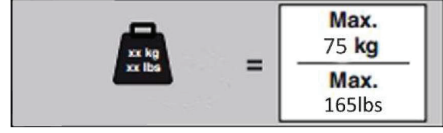
- (TR) PUL = 6 PARÇA
(GB) RING WASHER = 6 PIECES
(D) UNTERLEGSCHIBE = 6 STÜCK
(F) RONDELLE AUTOBLOQUANTE = 6 PIÉCES



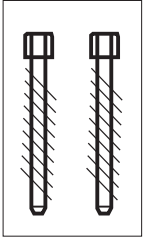
- (TR) SIZDIRMAZLIK ELEMANI = 6 PARÇA
(GB) IMPERMEABLE RUBBER = 6 PIECES
(D) KUNSTSTOFF-DICHTUNG = 6 STÜCK
(F) JOINT EN PLASTIQUE = 6 PIÉCES



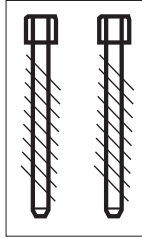
- (TR) PLASTİK TAPA = 6 PARÇA
(GB) PLASTIC PLUG = 6 PIECES
(D) GUMMISTOPFEN = 6 STÜCK
(F) BOUCHON PLASTIQUE = 6 PIÉCES



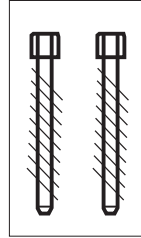
- (TR) Silikon = 40 gram
(GB) Silicon = 40 gram
(D) Klebr = 40 gramm
(F) Silicone = 40 grammes



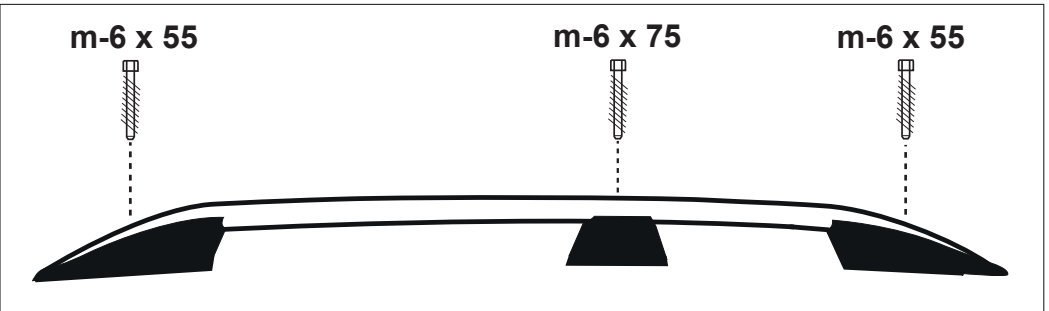
m-6 x 55 (REAR 2 PIECES)

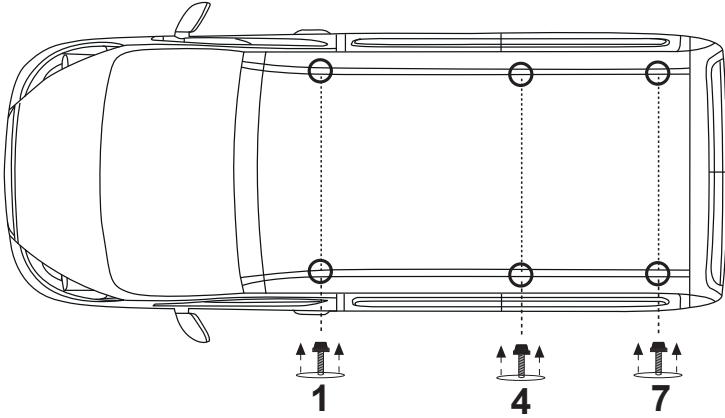


m-6 x 75 (MIDDLE 2 PIECES)



m-6 x 55 (FRONT 2 PIECES)

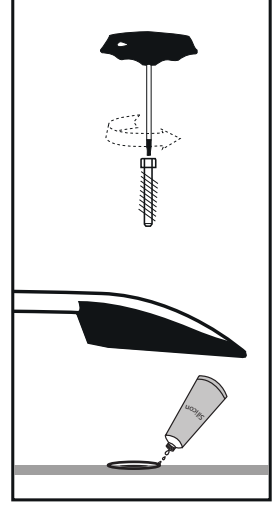
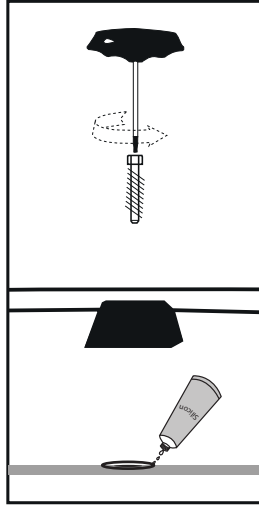
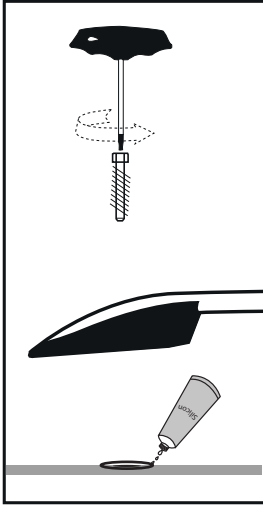




1) 1-4 ve 7 Numaralı tapaları araç üzerinden çıkartınız.

1) Remove the number 1-4 and 7 plastic plugs on the roof of the vehicle.

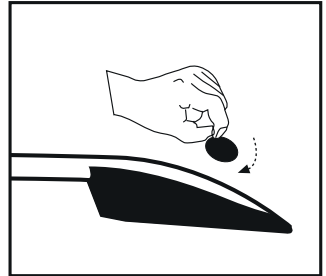
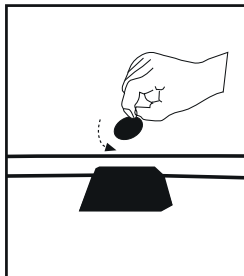
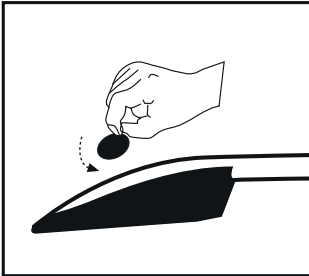
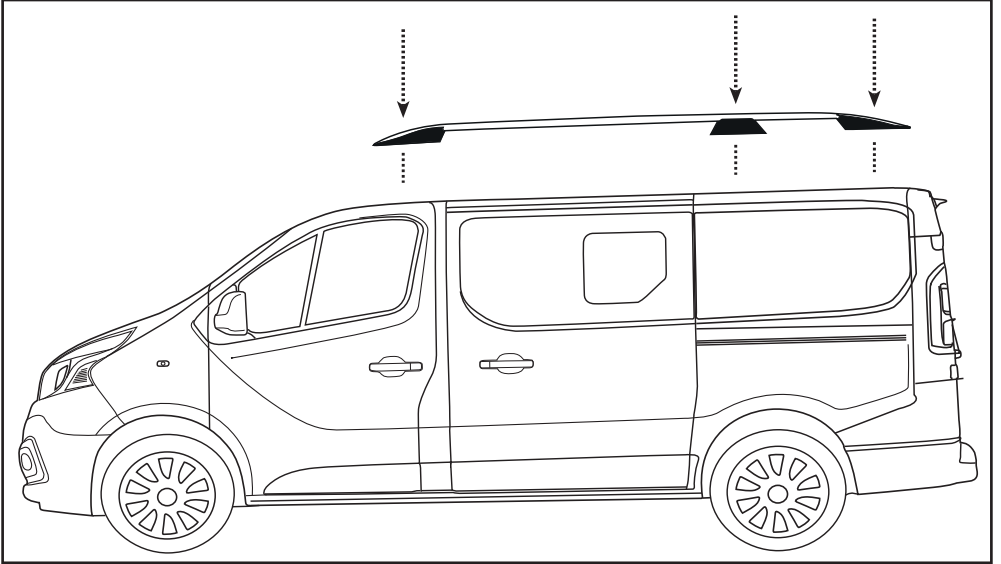
1) Entnehmen Sie die Kappen Nr.1-4 und Nr.7 von Ihrem Fahrzeug.



**2) Araç üzerine montajı yapılan sızdırmazlık elemanının merkez çevresine silikon sıkınız.
Port Bagajı araç üzerine montaj yerlerinden sabitleyip sıkınız.**

2) After sticking the spongy sealing material to the hole please peel off the surface and open the center hole of the material. Then apply silicon into to the center hole of spongy sealing material.

2) Fixieren Sie den Dachträger an den Montierstellen und befestigen Sie diesen.



3)Port Bagajın tapalarını yerlerine yerleştirerek montajı tamamlayınız.

3)Tap the plugs on roof rails.

3)Stecken Sie die Stopper in Ihre Plätze und schließen Sie diese.